

**MACHADO & SONS**  
**AGENTS & STEVEDORES PVT. LTD.**

**WAREHOUSING DIVISION**

# Introduction

- ⊙ **Machado & Sons Agents & Stevedores Pvt. Ltd.** is primarily engaged into Stevedoring and Agency Work
- ⊙ In 2007, the Company expanded its portfolio of operations to create Logistics & Warehousing facilities and manage them for its clients
- ⊙ The warehousing operations are detailed out in the following slides as follows
  - Infrastructure
  - Services Offered
  - Skills

# Infrastructure

## □ Land

- ◇ Verna Industrial Estate 8400 sq. m. of Land
- ◇ Cuncolim Industrial Estate 18,000 sq. m. of Land &
- ◇ Kudal Industrial Estate 9150 sq. m. of land

# Infrastructure

## □ Buildings

- ◇ In Verna, 3 warehouses measuring 6530 sq. m. having 8500 pallet positions (of which 3200 sq. m. is climate controlled) are being operated with modern material handling and storage equipment. We have 2 cold rooms (2 to 8 deg C) measuring 16500 cu. ft. with online data loggers. The data loggers are USFDA 21CFR Part 11 compliant.
- ◇ In Cuncolim, 3 warehouses measuring 4260 sq. m. along with office space of 250 sq. m.
- ◇ In Kudal, we have a modern warehouse building of 1980 sq. m.

# Infrastructure

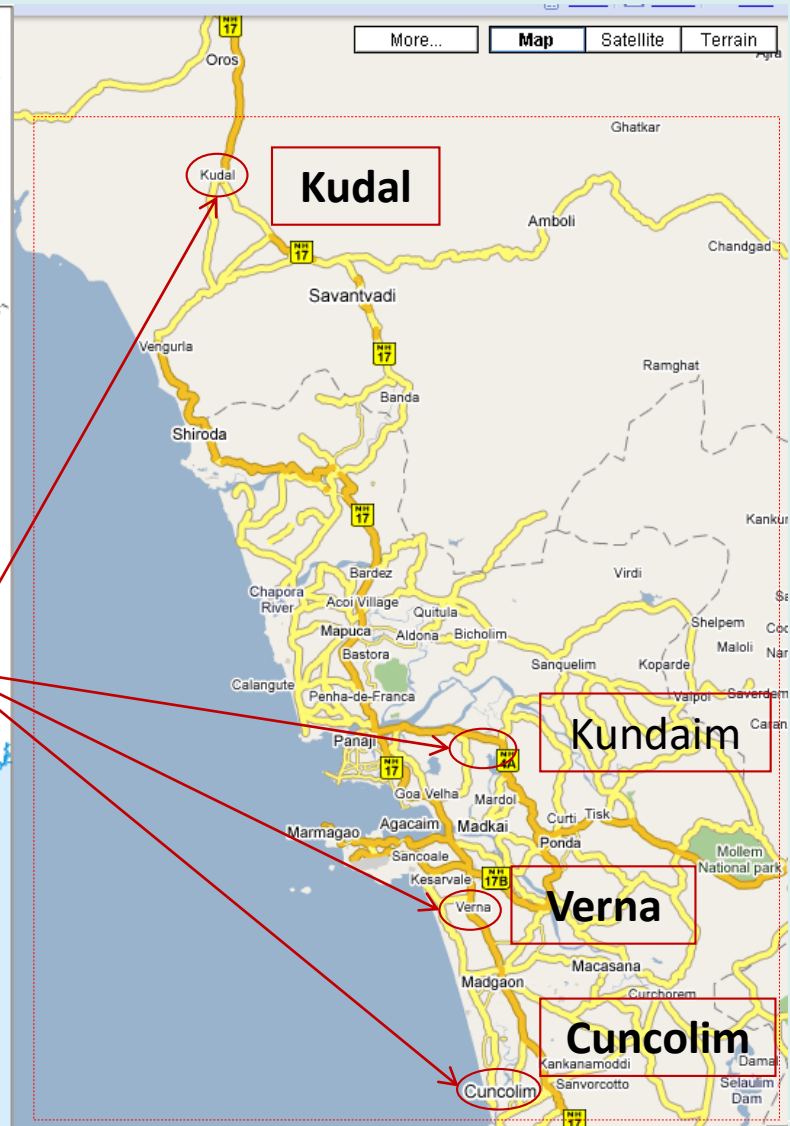
## ❑ External Warehouses

- ◇ In Verna Industrial Estate, we have outsourced warehouse space measuring 3000 sq. m.
- ◇ The warehouses have been upgraded and are used to service our pharmaceutical and healthcare clients.

## ❑ Client Warehouses

- ◇ In Kundaim, our design for a modern racking system was implemented.
- ◇ We operated double deep reach trucks to service 1920 pallet positions to supply material (raw materials, packaging materials and finished goods) just in time for the client.

# Infrastructure - Our Locations



# Infrastructure



Our Verna Warehouse Facilities



# Infrastructure



Entrance of one of our Warehouses in Verna, Goa



# Infrastructure



Double Deep Racking System by Schaefer for our pharmaceutical client



# Infrastructure



Double Deep Racking System by Schaefer for our pharmaceutical client



# Infrastructure



Crown Double Deep Reach Truck in Operation for our pharmaceutical client operations 11



# Infrastructure



Material stored for a leading pharmaceutical client



# Infrastructure



Climate controlled secondary packing of chocolates at our Cuncolim Facility

# Infrastructure



Cold Rooms at Verna – 2 nos. with an area of 2000 sq. ft.



# Infrastructure

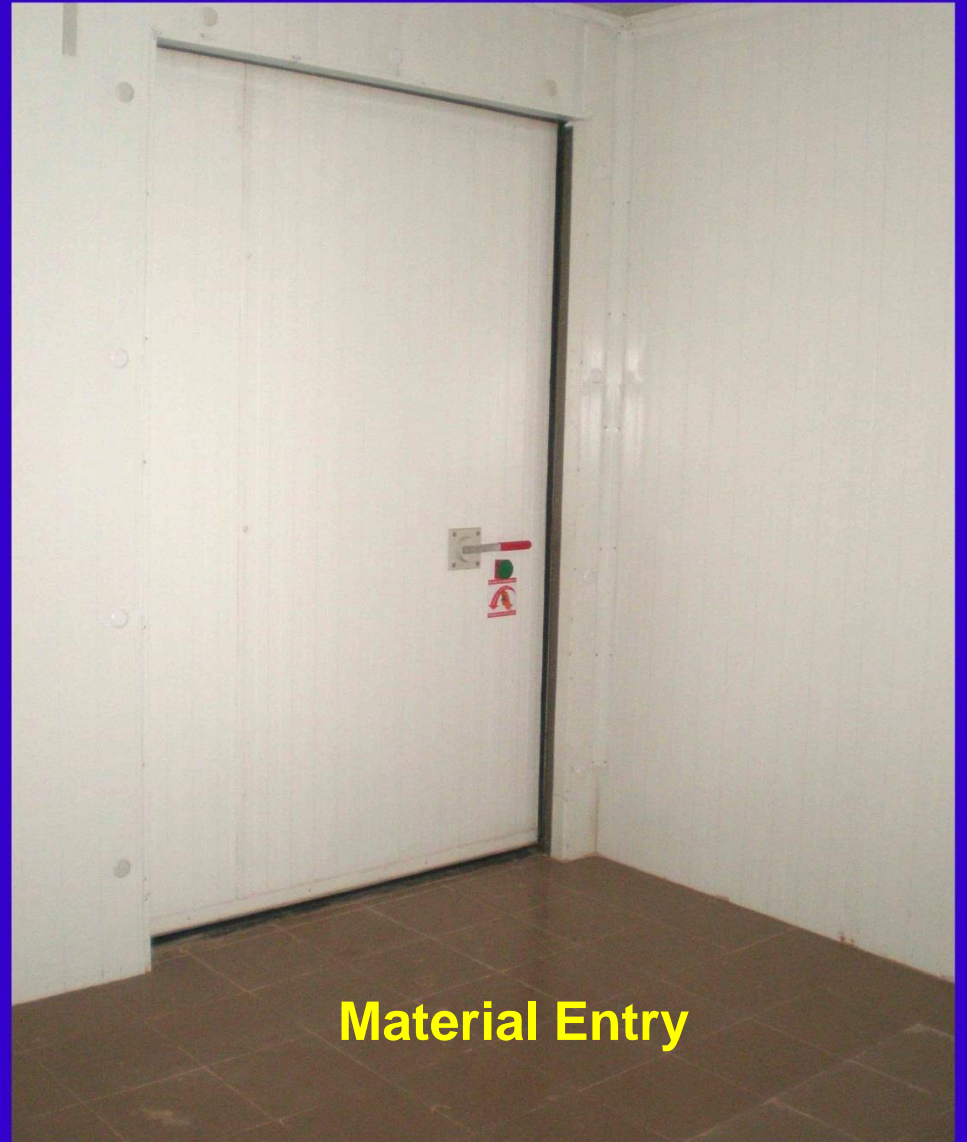


Inside view of one of our Cold Rooms

# Infrastructure



**Man Entry**



**Material Entry**

Inside view of one of our Cold Rooms



# Lean Solutions



Lean Solutions resulted in 30% labor reduction for the Cocktail Bagging Operation

# Services Offered

- Warehousing Space: We have warehouse space of 161000 sq. ft.
- Climate Controlled Storage: Within our warehousing space, the climate controlled space is about 46000 sq. ft.
- Cold Rooms: We have 2 cold rooms for 2 to 8 deg C temperature application with online data loggers for continuous monitoring.
- Logistics Support: We manage material movement to & from warehouse, storage & related documentation to enable better production control
- Materials Management: Maintaining Stocks / Inventory as per company / industry practices on hygiene, safety and housekeeping
- Material Handling: We handle material within the warehouse along with loading & unloading of materials using our material handling equipments

# Value Added Services

## Facility Management

- ❑ Designed and created a climate controlled space to carry operation for a leading manufacturer of Health Care Products
- ❑ Liaised with various departments & company officials for timely execution of the project

## Secondary Packaging

- ❑ Developed and created a facility to carry out secondary packaging of chocolates for leading FMCG Company
- ❑ Building a team to handle the activities in a climate controlled GMP environment
- ❑ Liaised with the company, vendors & contractors for timely execution of the project

## Warehouse Management

- ❑ Designed and managed a facility to scientifically store the raw material and semi finished goods for a leading FMCG company
- ❑ Inventory Management, Liaising with the company, vendors & contractors
- ❑ Building a team to handle these activities in a controlled GMP environment

# Skills

- ✍ Designing modern warehouses, optimizing warehouse layouts, improving space utilization, etc.
- ✍ Managing the supply chain and related warehousing & logistics activities
- ✍ Designing & Implementing modern storage systems
- ✍ Cold chain management
- ✍ Inventory management
- ✍ Warehouse Management, Facility Management
- ✍ Lean Management
- ✍ Industrial Engineering



# Our Clients

- Cipla Ltd.
- Lupin Ltd.
- Nestle India Ltd.
- Fertin India Pvt. Ltd.
- Cipla Biotech Pvt. Ltd.
- Glenmark Generics Ltd.
- Microlabs Ltd.
- Schiffer & Menezes India Pvt. Ltd.
- Hindustan Unilever Limited

Thank You